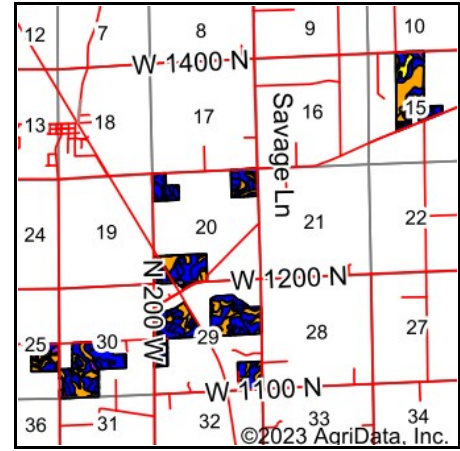
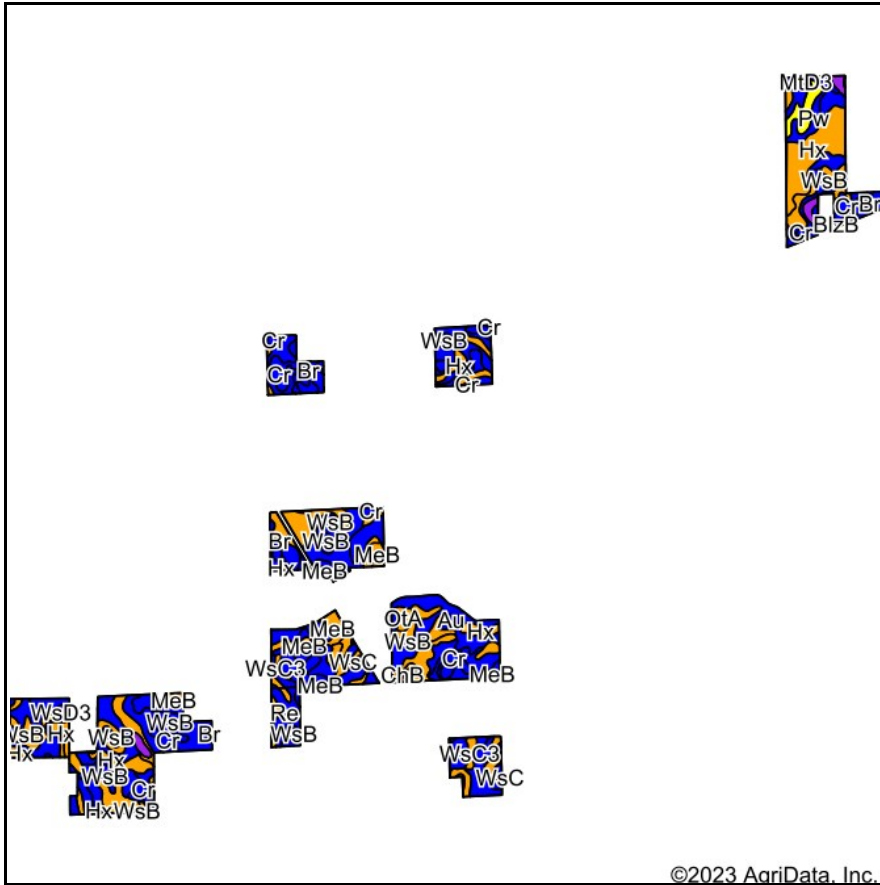


# Soils Map



State: **Indiana**  
 County: **Miami**  
 Location: **20-29N-4E**  
 Township: **Allen**  
 Acres: **638.77**  
 Date: **1/15/2023**



Maps Provided By:



Soils data provided by USDA and NRCS.

©2023 AgriData, Inc.

© AgriData, Inc. 2021

www.AgrDataInc.com

Area Symbol: IN103, Soil Area Version: 26

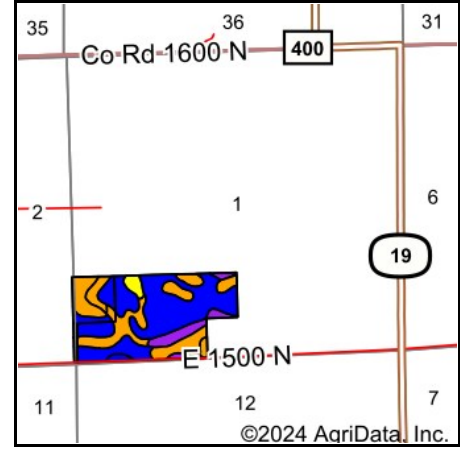
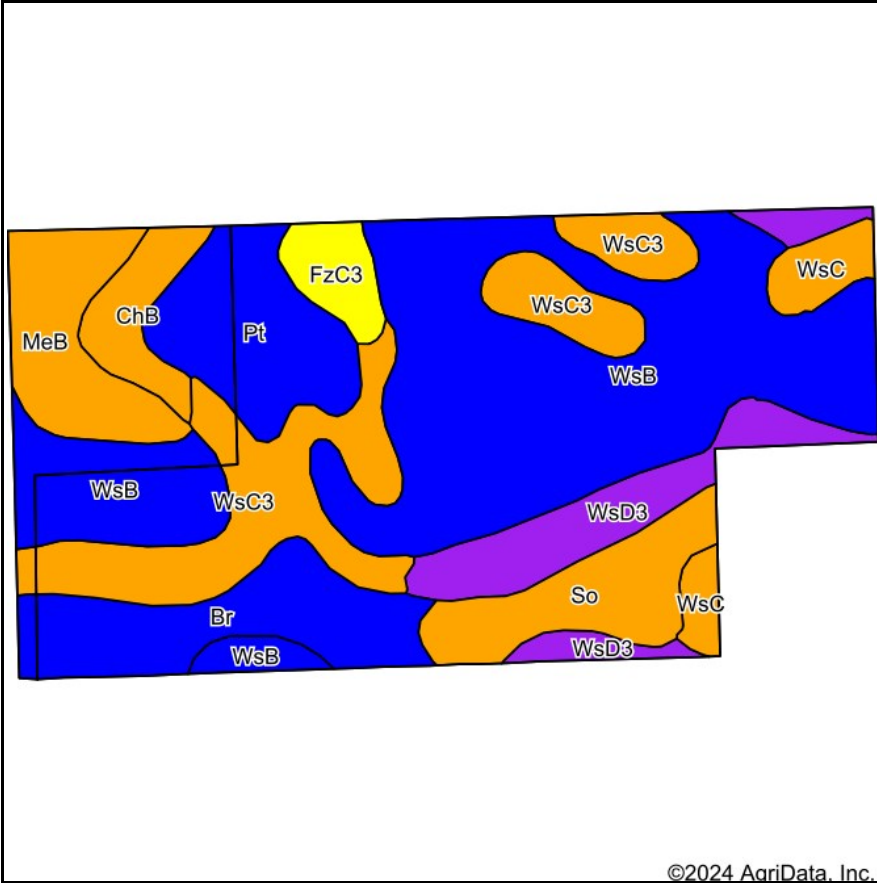
Code	Soil Description	Acres	Percent of field	Non-Irr Class Legend	Non-Irr Class *c	Corn Bu	Corn silage Tons	Grass legume hay Tons	Grass legume pasture AUM	Pasture AUM	Soybeans Bu	Winter wheat Bu	*n NCCPI Soybeans
WsB	Wawasee sandy loam, 2 to 6 percent slopes	148.18	23.2%		Ile	126		5		8	44	63	59
Re	Rensselaer loam, 0 to 1 percent slopes	101.33	15.9%		IIw	167		6		11	49	68	81
Br	Brookston loam	88.80	13.9%		IIw	172		6		12	49	70	74
Hx	Houghton muck, drained	76.89	12.0%		IIIw	159		5		11	42	64	91
WsC3	Wawasee loam, 6 to 12 percent slopes, severely eroded	64.29	10.1%		IIIe	125		4		8	44	63	39
Cr	Crosier loam, 0 to 2 percent slopes	47.71	7.5%		IIw	154		5		10	50	69	56
MeB	Metae loamy fine sand, 2 to 6 percent slopes	33.22	5.2%		IIIe	110		4		7	39	55	43
MtC3	Morley silty clay loam, 6 to 12 percent slopes, severely eroded	10.07	1.6%		IVe	105	15	4	7		37	47	34
WsC	Wawasee sandy loam, 6 to 12 percent slopes	9.57	1.5%		IIIe	130		4		9	46	65	57
ChB	Chelsea fine sand, 2 to 9 percent slopes	9.24	1.4%		IIIls	90		3		6	32	41	25

Code	Soil Description	Acres	Percent of field	Non-Irr Class Legend	Non-Irr Class *c	Com Bu	Corn silage Tons	Grass legume hay Tons	Grass legume pasture AUM	Pasture AUM	Soybeans Bu	Winter wheat Bu	*n NCCPI Soybeans
Pw	Pewamo silty clay loam, 0 to 1 percent slopes	9.07	1.4%		llw	157		5	11		47	64	66
Pm	Palms muck, drained	8.02	1.3%		lllw	158		5		11	43	63	91
WsD3	Wawasee loam, 12 to 18 percent slopes, severely eroded	8.02	1.3%		Vle	110		4		7	39	55	35
OtA	Oshtemo sandy loam, 0 to 4 percent slopes	5.78	0.9%		lls	99		4		6	35	50	56
MsB	Glynwood silt loam, 2 to 6 percent slopes	5.45	0.9%		lle	133		4	8		46	60	53
Au	Aubbeenaubbee sandy loam, 0 to 2 percent slopes	4.62	0.7%		llw	135		5		9	44	61	68
Gr	Gilford sandy loam, till plain, 0 to 2 percent slopes	4.20	0.7%		lllw	146		5		10	33	59	48
MtD3	Morley silty clay loam, 12 to 25 percent slopes, severely eroded	3.10	0.5%		Vle	75		3		5	26	34	27
Wh	Washtenaw silt loam	1.21	0.2%		llw	165		5		11	49	66	85
<b>Weighted Average</b>					<b>2.43</b>	<b>143.7</b>	<b>0.2</b>	<b>5</b>	<b>0.3</b>	<b>9.2</b>	<b>44.9</b>	<b>64</b>	<b>*n 64.5</b>

\*n: The aggregation method is "Weighted Average using all components"

\*c: Using Capabilities Class Dominant Condition Aggregation Method

# Soils Map



State: **Indiana**  
 County: **Miami**  
 Location: **1-29N-4E**  
 Township: **Perry**  
 Acres: **71.1**  
 Date: **8/21/2024**



Soils data provided by USDA and NRCS.

©2024 AgriData, Inc.

Area Symbol: IN103, Soil Area Version: 27

Code	Soil Description	Acres	Percent of field	Non-Irr Class Legend	Non-Irr Class *c	Corn Bu	Soybeans Bu	*n NCCPI Corn	*n NCCPI Soybeans
WsB	Wawasee sandy loam, 2 to 6 percent slopes	27.12	38.2%		Ile	126	44	67	61
WsC3	Wawasee loam, 6 to 12 percent slopes, severely eroded	10.81	15.2%		IIle	125	44	51	42
Br	Brookston loam	6.32	8.9%		IIlw	172	49	77	74
WsD3	Wawasee loam, 12 to 18 percent slopes, severely eroded	5.89	8.3%		Vle	110	39	48	38
Pt	Patton silty clay loam	5.71	8.0%		IIlw	175	49	80	81
MeB	Metae loamy fine sand, 2 to 6 percent slopes	4.62	6.5%		IIle	110	39	62	43
So	Sloan silty clay loam, 0 to 1 percent slopes, frequently flooded	4.51	6.3%		IIIlw	134	47	79	77
ChB	Chelsea fine sand, 2 to 9 percent slopes	2.30	3.2%		IIIs	90	32	37	26
WsC	Wawasee sandy loam, 6 to 12 percent slopes	2.11	3.0%		IIle	130	46	65	59
FzC3	Fox clay loam, 8 to 15 percent slopes, severely eroded	1.71	2.4%		IVe	80	28	52	41
<b>Weighted Average</b>					<b>2.72</b>	<b>129.9</b>	<b>43.6</b>	<b>*n 64</b>	<b>*n 57.1</b>

\*n: The aggregation method is "Weighted Average using all components"

\*c: Using Capabilities Class Dominant Condition Aggregation Method