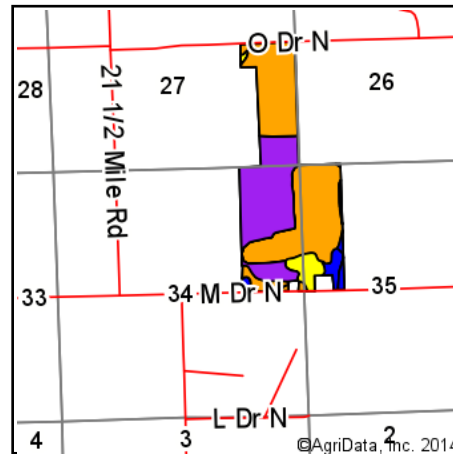
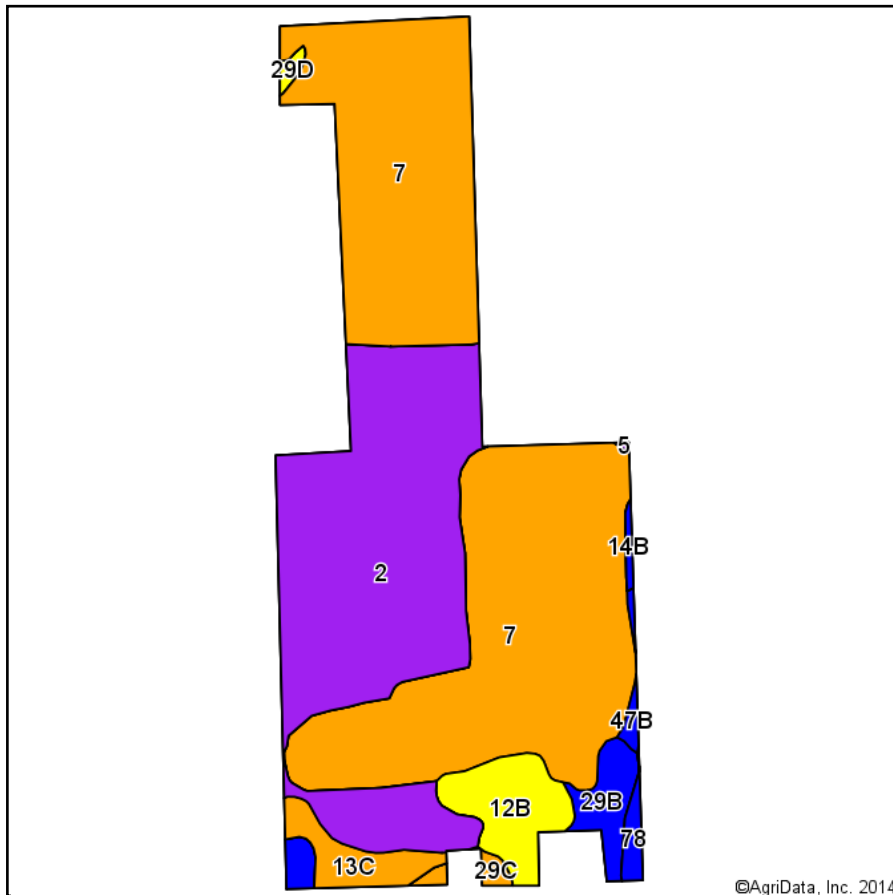
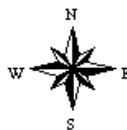


Soil Map



State: **Michigan**
 County: **Calhoun**
 Location: **34-1S-5W**
 Township: **Lee**
 Acres: **181.03**
 Date: **2/25/2014**



Maps Provided By:

 CUSTOMIZED ONLINE MAPPING
 © AgriData, Inc. 2013 www.AgriDataInc.com

Code	Soil Description	Acres	Percent of field	Non-Irr Class Legend	Non-Irr Class	Irr Class	Corn	Corn Irrigated	Oats	Soybeans	Soybeans Irrigated	Winter wheat	Winter wheat Irrigated
7	Houghton muck, drained	98.49	54.4%		Illw		128			35		35	
2	Houghton muck, undrained	58.89	32.5%		Vw		76					35	
12B	Coloma loamy sand, 0 to 6 percent slopes	8.72	4.8%		IVs	IIIe	85	165	70	28	52	38	
29B	Hillsdale sandy loam, 0 to 6 percent slopes	5.56	3.1%		Ile	Ile	99	165	80	32	57	44	
13C	Spinks loamy sand, 6 to 12 percent slopes	5.03	2.8%		IIIe	IIIe	69	148	65	23	45	28	
78	Pewamo clay loam	1.35	0.7%		IIw		122		98	45		60	
29C	Hillsdale sandy loam, 6 to 12 percent slopes	1.10	0.6%		IIIe	IIIe	89	150	75	29	51	39	
47B	Teasdale sandy loam, 1 to 4 percent slopes	0.82	0.5%		IIw		109	8	90	35	3	50	2
29D	Hillsdale sandy loam, 12 to 18 percent slopes	0.56	0.3%		IVe		57		50			23	
14B	Bronson sandy loam, 0 to 6 percent slopes	0.45	0.2%		Ile	IIs	95	155	75	27	53	35	
5	Palms muck	0.06	0.0%		Vw		101		88	36		50	
Weighted Average							105.8	18.5	9.6	22.8	6	35.5	0

Area Symbol: MI025, Soil Area Version: 10, Established: 12/17/2013 06:36:14 PM

Field borders provided by Farm Service Agency as of 5/21/2008. Aerial photography provided by Aerial Photography Field Office.